

SHOWROOMS

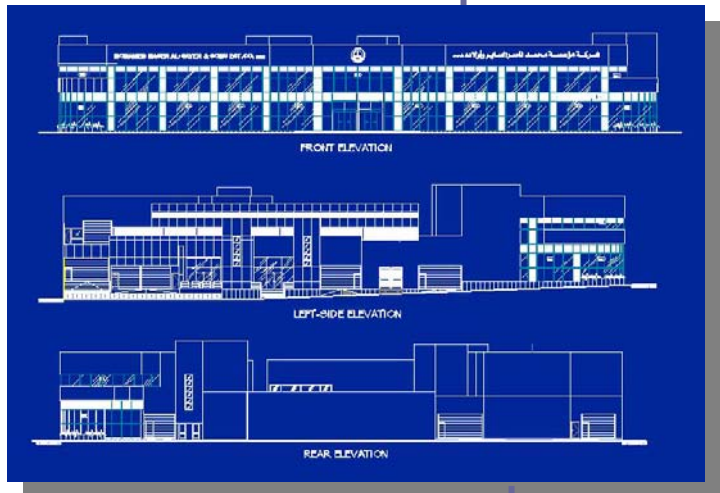
**Project:**  
**Design and Construction**  
**of Fahaheel Showroom**  
**and Car Services**

**Owner:**  
**Mohamed Naser Al-**  
**Sayer & Sons Est. Co.,**  
**Location:**  
**Al-Fahaheel Industrial**  
**Zone, Kuwait**



**Description:**

- **Plot Area:**  
5,000 sq.mts.
- **Number of Floors:**  
Basement, Ground Floor and (3) Three Mezzanine Floors
- **Project Elements:**  
The structures facilities are passage and service bays, access oil change pit, labor and maintenance area, work station, spray booth, finishing and detailing, car parkings, lexus service reception, control rooms, access ramps and lifts, women's waiting area, fresh oil tanks, general toilets, storage and stair cases which can all be found at the basement floor. As for the ground floor, service zones, car parking, sub-station, main showroom and offices, tire and spare parts storage was located. The mezzanine floor was designed for the car passage, show room, additional parking areas and for the car wash area.



**Scope of Works:**

The F&M Consultant Engineers furnished the:

- Design
- License Approval
- Tender Documents